

Control system for escalators

Electrical modernization package for escalators

We offer an innovative solution **that fully replaces the control of the original escalator** and brings it greater efficiency, safety, energy savings and reduced operating costs. Our electrical modernization packages allow easy integration with different escalator models and ensure reliable and smooth operation.

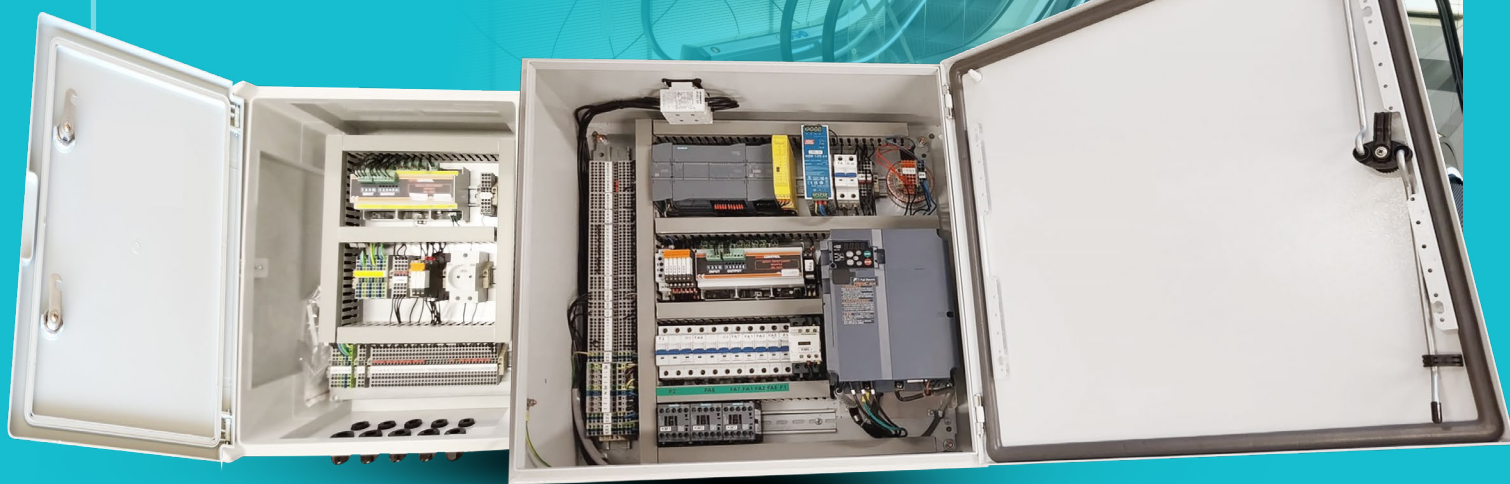
CONTENT OF THE MODERNIZATION ELECTRICAL PACKAGE FOR ESCALATORS

REMS-UL

- Upper control cabinet of the escalator with integrated main switch, PLC control.
- Safety module with 8 inputs.
- Safety module for monitoring the speed of handrails and staircases.
- Frequency converter.

REMS-LL

- Lower control cabinet of the escalator with safety module with 8 inputs.



ADDITION

- 2× display with 8 or 16 characters for UL/LL platforms.
- Maintenance run controller with a cable.
- Remote monitoring and visualisation via the **lemon** monitoring system.

MANUFACTURER:

BETACONTROL

Beta Control s.r.o.

Cerneho 829/58, 635 00 Brno-Bystrc
Czech Republic

www.betacontrol.eu / sales@betacontrol.cz

TYPES OF SAFETY SENSORS

1. Entrapment detection safety panel

Detection of a foreign object entrapment between moving escalator steps and the fixed comb plate at the landing areas, as well as at the skirt panel.

2. Safety switch for handrail reverse entry

Detection of improper movement/entry of the handrail back into the system, detection of different speed of the handrail movement compared to the escalator speed.

3. Step damage detection safety feature

Detection of the condition check of individual escalator steps and early warning of possible mechanical damage.

4. Escalator overspeed detection safety feature

It monitors and controls the speed of the escalator.

5. Safety STOP button

Used to immediately stop the escalator in the event of an emergency, a hazard or incident.

6. Escalator comb plate lighting safety feature

It ensures sufficient visibility in the comb plate area, i.e. at the junction between the escalator and the fixed components of the escalator.

7. Side control and operation panel at the lower landing of the escalator

A device located at the lower landing entry or exit point of an escalator, used by service technicians to monitor, control and diagnose the escalator.

FUNCTIONALITY DIAGRAM

